

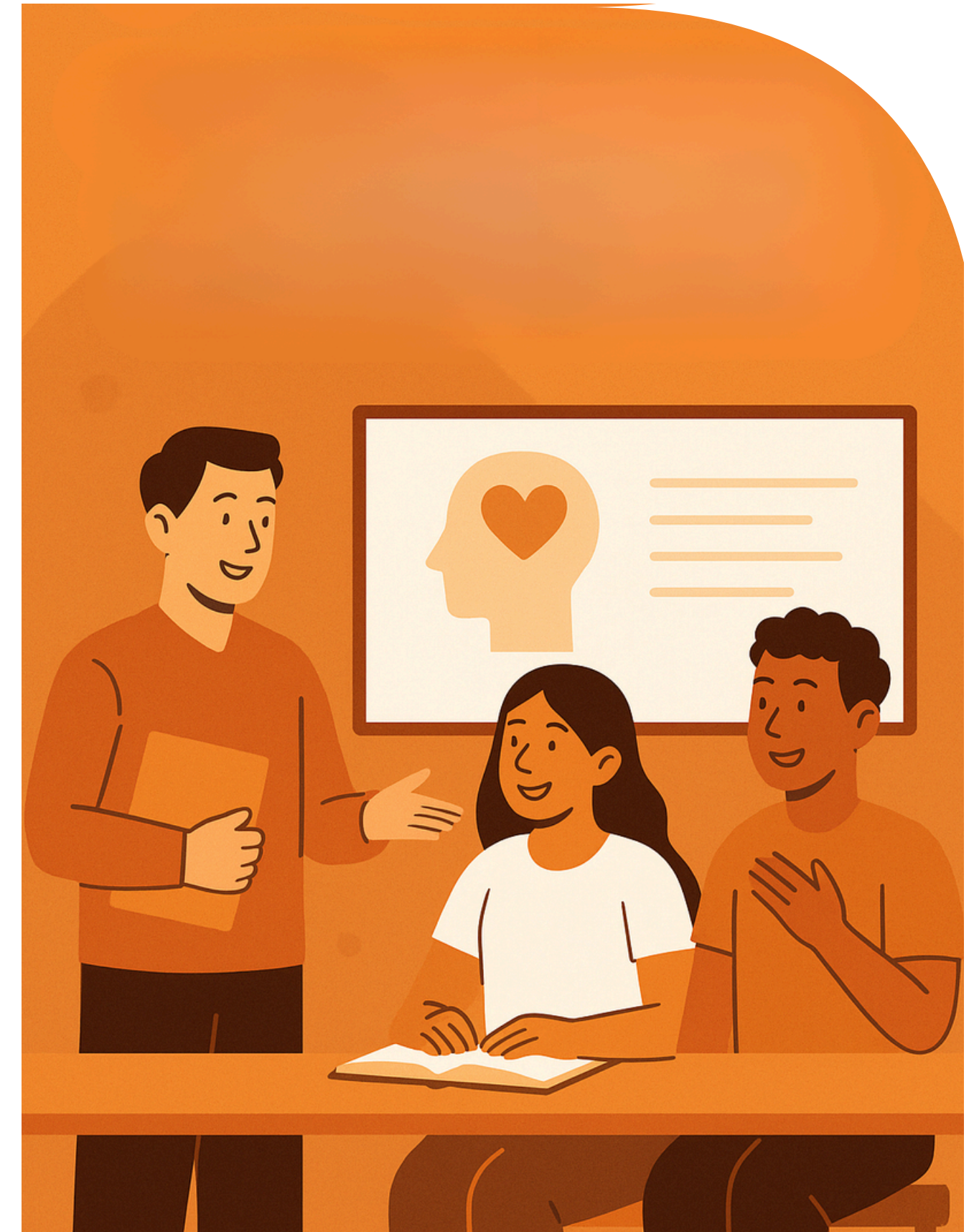


**UAE | Germany | Qatar | Ghana**

# **EMOTIONALLY INTELLIGENT EDUCATION**

---

**Teach with Awareness. Connect with Empathy.  
Empower Through Understanding.**



# Emotionally Intelligent Education

---

Education is more than the transfer of knowledge—it is the cultivation of self-awareness, emotional intelligence, and meaningful human connection. Teachers and educators who lead with empathy, regulate their emotions, and understand their students' needs create classrooms that are not only academically successful but also emotionally safe and inspiring.

This Emotionally Intelligent Education training supports educators in developing their own emotional intelligence and applying it in educational settings. Participants will learn to manage classroom dynamics, build trust with students, and foster an emotionally supportive environment that enhances learning and growth.

# Objectives / Learning Outcomes:

---



By the end of this training, participants will be able to:



- Understand the components of emotional intelligence and their application in education
- Recognize and regulate their own emotional responses in the classroom
- Build stronger relationships with students through empathy and presence
- Respond to student behaviors with insight and compassion
- Support students' emotional development and resilience
- Create a classroom culture rooted in psychological safety and mutual respect



# Course Outline / Key Topics:

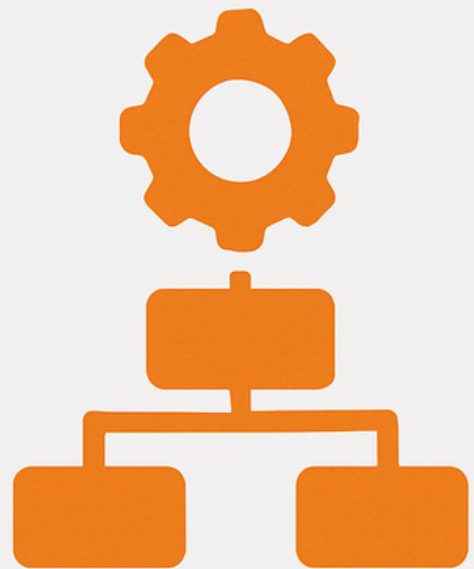
---



- Introduction to Emotional Intelligence in Teaching
- Self-Awareness and Emotional Triggers in the Classroom
- Managing Emotions During Challenging Moments
- Empathy and Active Listening for Educators
- Creating Emotional Safety in Learning Environments
- Supporting Students Through Emotional Ups and Downs
- EI Strategies for Motivation, Feedback, and Behavior Management
- Building a Culture of Trust and Inclusion in the Classroom

# Methodology

---



- Reflective journaling and emotional awareness exercises
- Real-life classroom scenarios and role plays
- Group discussions and peer support circles
- Emotional intelligence assessments and tools
- Guided mindfulness and grounding practices for educators
- NLP and student-centered coaching techniques

# Who should attend

---



- Teachers, educators, and teaching assistants
- School counselors and pastoral care staff
- Educational leaders and administrators
- Coaches and mentors in academic environments
- Anyone working in education seeking stronger emotional connection and classroom impact

# Duration Options

---



- 1-Day EI Awareness for Educators
- 5-Day In-Depth Application of EI in the Classroom
- Series for School-Wide Emotional Intelligence Integration



# Some of our Clients







# Let's Build Together



**Phone:**

**UAE:** +971 56 3554982  
**Germany:** +49 8031 2200456  
**Qatar:** +974 50 586098  
**Ghana:** +233 5324 425 98



**Email:**

Info@mindyourpower.org



**Follow us on our  
Social Media Platforms :**



**Website :**

www.mindyourpower.org  
www.mindyourpoweracademy.com

